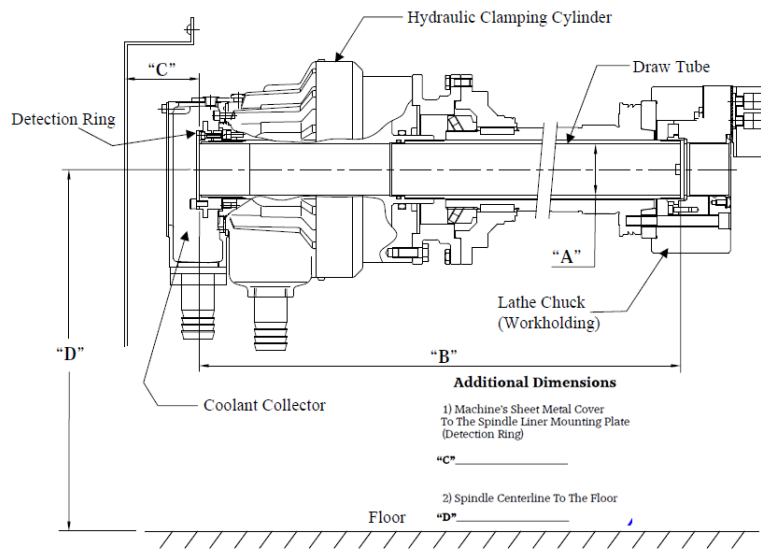


Attached below is an information sheet and diagram that we will need you to fill out in order to provide you with the correct spindle liners for your lathe. The Yellow section is required information to determine the Liner design number, The blue section lets us determine the stock sizes to accommodate, meanwhile the orange section just tells us a little about yourself, your company, also allowing us to add you into our system for a smoother, faster, and easier return visit.

**Typical CNC Lathe Spindle Configuration**



**Additional Dimensions**

1) Machine's Sheet Metal Cover To The Spindle Liner Mounting Plate (Detection Ring)

"C" \_\_\_\_\_

2) Spindle Centerline To The Floor

"D" \_\_\_\_\_

Spindle Liner Requests		J&B Berns
Customer Name _____		
Company Name _____		
Phone # _____		
Email Address _____		
End User [ ] Dealer [ ]		
(If dealer) End User _____		
New Customer [ ] Previously Ordered [ ]		
(If previously ordered) Liner Number _____		
Lathe Make _____		
Lathe Model _____		
Lathe Serial # _____		
Hydro. Cyl. Make _____		
Hydro. Cyl. Model _____		
Bar Feeder/Loader Make _____		
Bar Feeder/Loader Model _____		
Draw Tube ID (in millimeters) _____		
Spindle Length _____		
Bar Stock Sizes _____		
Bar Stock Length _____		
Bar Stock Material _____		
Round [ ] Hex [ ] Square [ ]		
NOTES: _____		
_____		
_____		